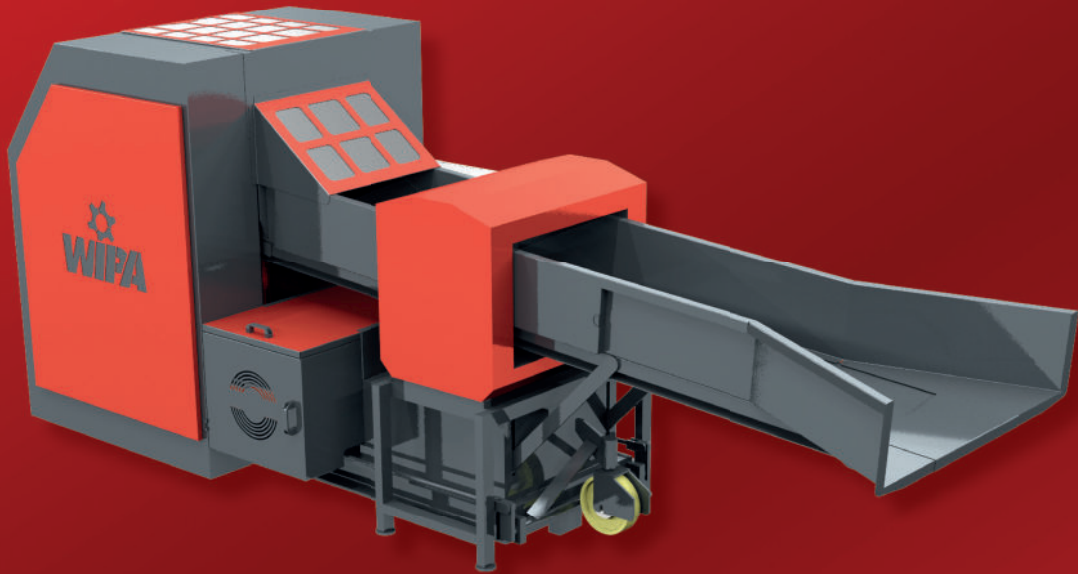


EN



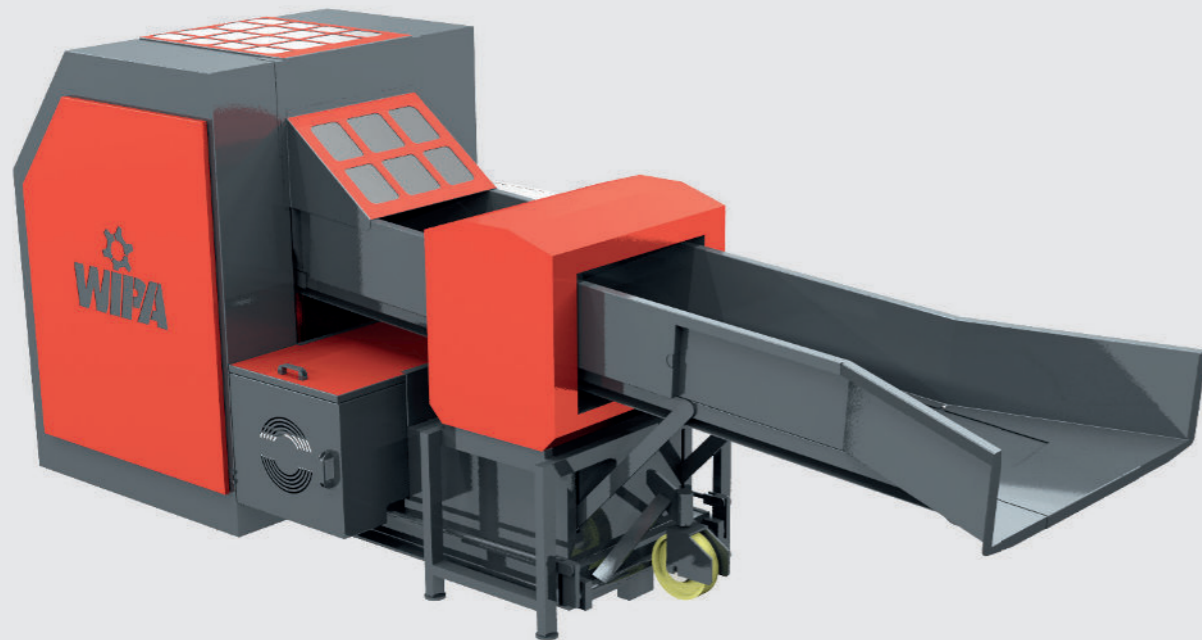
**THAT'S THE WAY
TO RECYCLE**

PRODUCT CATALOGUE
GUILLOTINE CUTTERS



WIPA | 48703 Stadtlohn | Germany





TYPE WGA
TYPE WGAD

WIPA GUILLOTINE CUTTERS

Type WGA / WGAD

WIPA continuous guillotine cutters have been especially designed to shred fibres textiles. Additionally, they can also process films, foils, fleece and nonwovens.

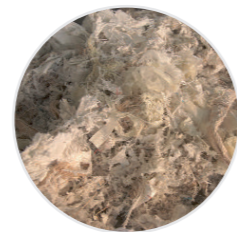
Material feed

Materials can be fed into the guillotine cutter manually or by means of a specially conceived feeding device. Various feeding devices are available for different materials, including bulky materials such as bales of fibres, cables, ropes etc.

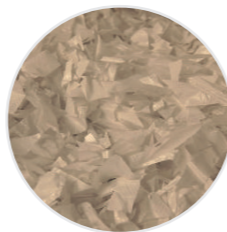
The process

The materials are put onto the feed conveyor of the machine, either manually or via a feeding device installed ahead of the unit. The conveyor transfers the materials to a compression device, which compresses the materials and moves them towards the knives. The knife mechanism consists of one moving and one stationary knife and has a very precise cut, ensuring a clean cutting edge.

PP Big Bag / Raffia



Shredder



Guillotine

Carpet



Shredder



Guillotine

PP fleece



Shredder



Guillotine

PA textile



Shredder



Guillotine

ADVANTAGES

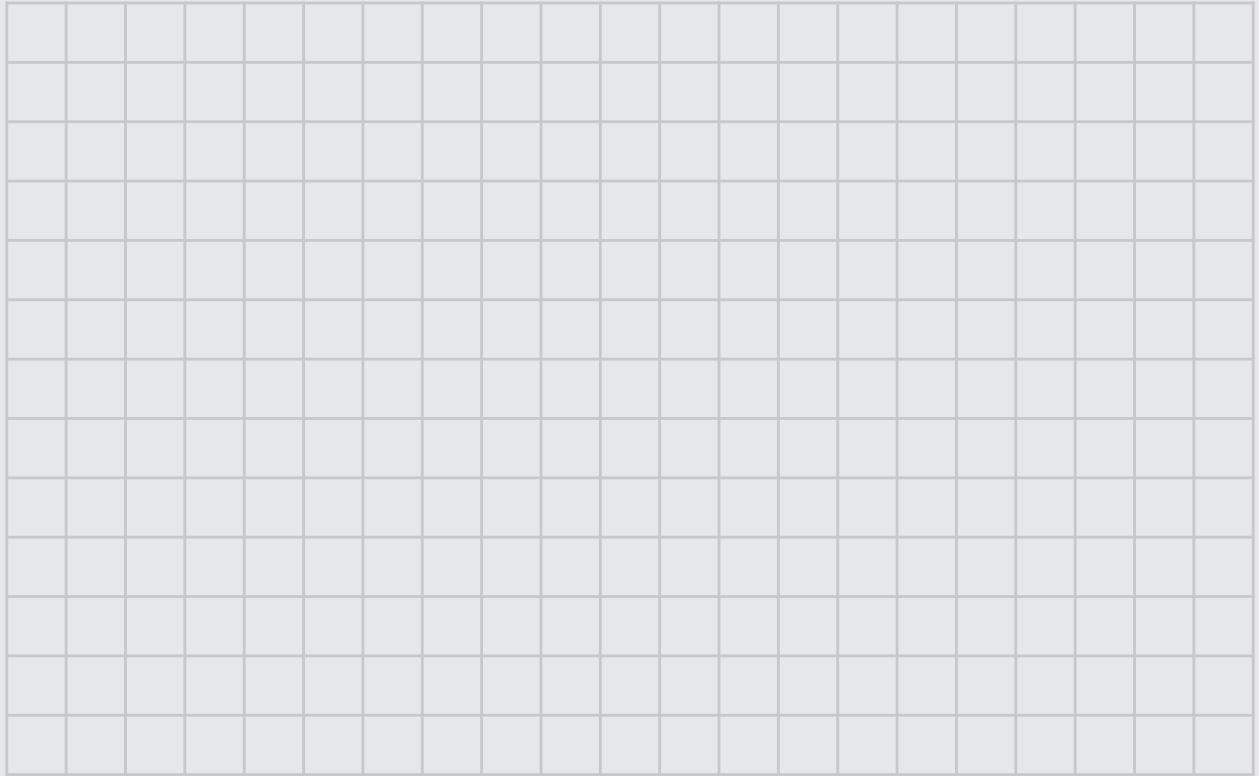
- The cutting gap can be adjusted by 2 handwheels during operation
- The cutting length can be adjusted from 10 mm to 200 mm
- Cutting width: 600 mm
- Maximum thickness of the input materials to be processed: 180 mm
- Maximum loading thickness: 500 mm
- Cutting speed: around 200 cuts/minute
- Throughput capacity up to 2.500 kg/h, depending on material density
- Feeding devices for a wide variety of materials are available

TECHNICAL DATA	WGA	WGAD
Cutting width	600 mm	600 mm
Cutting length range	10 mm - 200 mm	10 mm - 200 mm
Cutting speed	200 cuts/min	200 cuts/min
Compressed material thickness	200 mm	200 mm
Infeed material thickness	500 mm	500 mm
Drive	22 kW	22 kW
Metal detector	-	-
Output up to	2,5 t/h	2,5 t/h

Output rate and technical data are experience values and can deviate depending on material type.



NOTES



WIPA Werkzeug- und Maschinenbau GmbH | Benzstraße | 48703 Stadtlohn
Deutschland | Tel.: +49 (0) 2563 20585-0 | info@wipa-germany.de | www.wipa-germany.de